

BIMBO COFFEE SHOP

THE LIFE OF TWO BUSTY BIMBOS, THEIR BUSINESS, AND THE CHALLENGES THEY FACE AS THEIR ASSETS GROW.

CHAPTER 12

NEW HAIR,
NEW YOU!



<https://patreon.com/mrphoenyxx>

STORY AND
ART BY
MR PHOENYXX

KINDRA SMILED AT
BRIANNA. IT WAS
HER TURN TO GET
A NEW HAIR STYLE,
BUT WHICH ONE?

SOOO...
YOU LOOKED
AT THE MAGAZINES,
SAW SOME
STYLES.





DID YOU SEE ANYTHING THAT YOU LIKED, HMMMM?

YOU SHOULD TOTALLY GO BIG: HUGE BIMBO BOOBS, AND GIANT, POOFY, SUPER SLUTTY HAIR.





WELL...
THAT'S ONE
IDEA. IT CERTAINLY
LOOKS GOOD
ON YOU.



WHY
DON'T YOU
HAVE A SEAT
AND WE'LL
TALK.

SO SHE DID!
BRIANNA TOOK A
SEAT AT KINDRA'S
STATION, AND
ALYSA FOUND
HERSELF A NEARBY
MIRROR.





SO
WHAT ARE WE
THINKING?

A woman with voluminous, curly purple hair is the central focus. She is wearing a black, off-the-shoulder top with large, rounded cutouts. Her accessories include large gold hoop earrings, a gold chain necklace with a crescent moon pendant, and a gold chain choker. She is looking directly at the camera with a neutral expression. The background is a hair salon with a tiled floor, pink chairs, and a counter with a mirror. A speech bubble is positioned to her right.

I
THINK I
WANT STRAIGHTER
HAIR. I'VE ALWAYS
HAD THESE
CURLS.

WE
CAN DO
THAT! DO YOU
MIND IF I GIVE
YOUR HAIR A
WASH?



THAT
SOUNDS GREAT!
LET'S DO IT!



KINDRA TOOK
BRIANNA OVER TO
THE WASH STATION
AND PUT A COVER
OVER HER.

THIS
WILL TAKE
THE COLOR OUT
OF YOUR
HAIR.



KINDRA'S MASSIVE
MOUNDS PRESSED
INTO BRIANNA AS
SHE WASHED HER
LOVELY HAIR.

BUT
WE CAN
PUT THAT BACK
IN IF YOU
WANT.



THE PRODUCT THAT
KINDRA USED DID
NOT HAVE ANY
WEIRD LABELS.





BUT YOU CAN BET THAT IT WASN'T NORMAL. THE SLIDS CERTAINLY LOOKED... SPECIAL.



BLING!

AND IT DID, IN FACT, REMOVE THE COLOR FROM HER HAIR, RETURNING IT TO TRUE BLACK.


KINDRA MOVED
BRIANNA BACK TO
HER STATION AND
STARTED DRYING
HER HAIR.



THERE WAS A LOT MORE HAIR UNDER THERE WHEN SHE REMOVED THE TOWEL.

THERE WE GO! NICE AND CLEAN.



A woman with dark, curly hair and a black top with a gold necklace is shown in a salon. She is looking directly at the camera with a neutral expression. The background shows a salon with red chairs and a counter.

HER CURLS MUST
HAVE BEEN WOUND
REALLY TIGHT!


UMMMM...
THIS STILL SEEMS
REALLY CURLY?



DON'T
WORRY, WE'RE
GONNA GET THERE,
JUST TRUST
ME!



OK,
I WILL,
I MEAN THAT
I DO.



KINDRA WORKED
AWAY FOR SEVERAL
MINUTES BEFORE
BRIANNA FELT THAT
SHE NEEDED TO
INTERRUPT HER.

I
KNOW THAT
I JUST SAID THAT I
WOULD TRUST
YOU.



BUT
AREN'T CURLERS
GOING TO MAKE MY
HAIR, YOU KNOW,
CURLIER?



NOT
THE WAY
THAT I USE
THEM.

AND NOT WITH THE PRODUCTS THAT I USED.





YOU'LL
SEE ONCE IT'S
DRY.

KINDRA GOT HER
SETUP AT THE NEXT
STATION AND
TURNED TO ALYSA.



THAT
STYLE REALLY
DOES LOOK SUPER
HOT ON
YOU.



OH
YEAH, IT
DOES!

ALYSA CONTINUED
TO POSE FOR
HERSELF IN THE
MIRROR.



SUPER
HAWT!



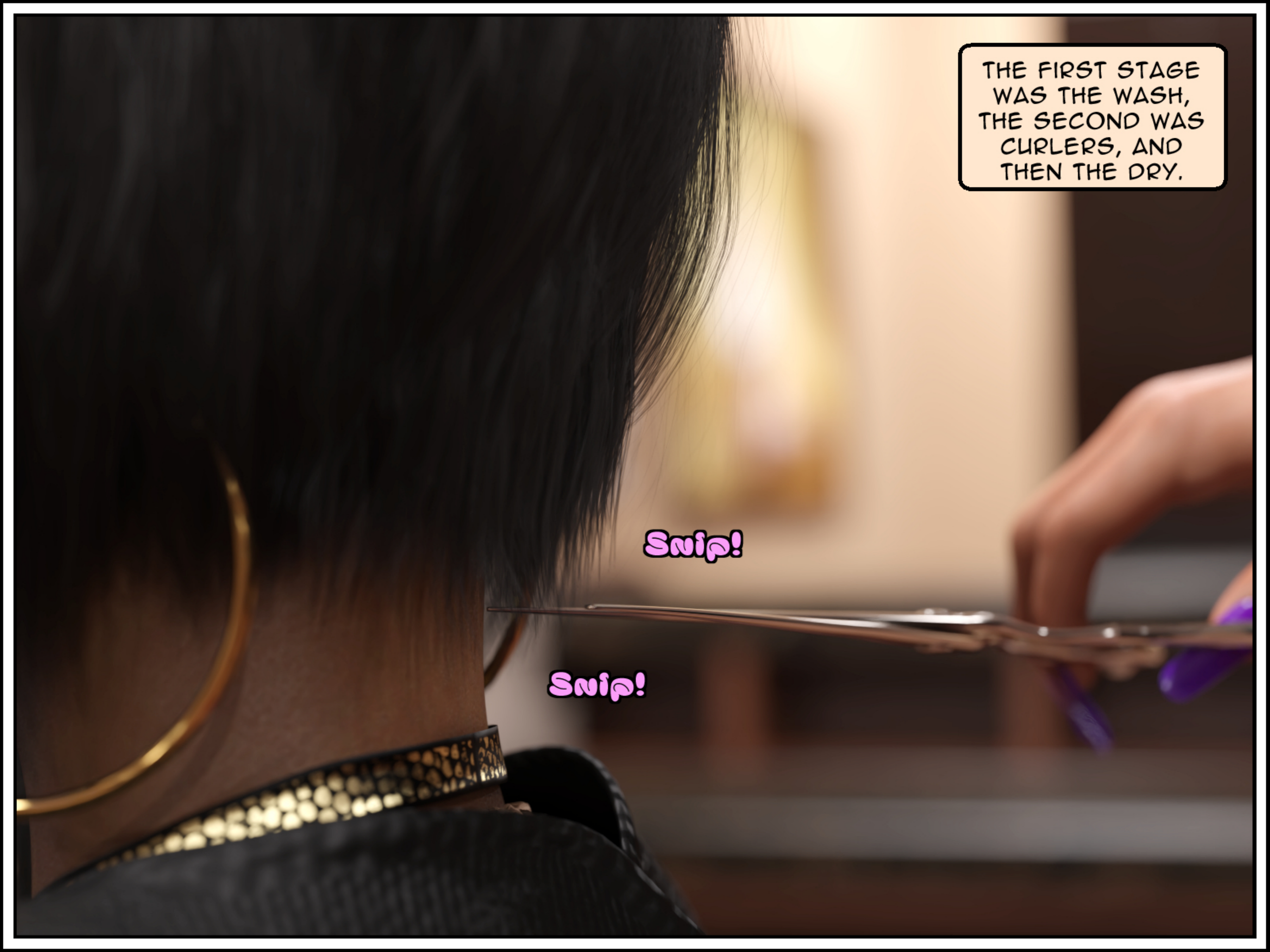
I
LOVE IT!
THANK YOU SO
MUCH!



THE FIRST STAGE
WAS THE WASH,
THE SECOND WAS
CURLERS, AND
THEN THE DRY.

Snip!

Snip!






AND THE FINAL
STAGE WAS A CUT
AND PROPER
STYLE.

Snip!

Snip!



Brush!

Brush!

THERE MIGHT HAVE BEEN A FLATTENING IRON USED IN THERE SOMEWHERE TOO.

BEFORE KINDRA
BRUSHED IT OUT
AND FINISHED OFF
HER NEW STYLE.

Brush!

Brush!

THERE
WE GO! ALL
DONE!





WOW!
IT'S PERFECT!
LOVELY.



IT'S
EXACTLY
WHAT I HAD IN
MIND.

A woman with long, dark, wavy hair is shown in profile, looking towards the left. She is wearing a gold chain necklace with a crescent moon pendant and large gold hoop earrings. She is in a salon setting, with a large black circular object behind her and a person with purple hair visible in the background. A speech bubble is positioned to her right.

GLAMOROUS,
SOPHISTICATED,
STILL SEXY.




I
TOTALLY LOVE
IT!

THAT'S GREAT TO HEAR, BUT THERE IS ONE LAST THING.

THERE MIGHT HAVE BEEN SOME LYING, AS THERE WAS ONE FINAL STEP.

GLOW!



A close-up photograph of a woman's long, dark brown hair being styled with a red light wand. The wand is held by a person whose hand and part of their black sleeve are visible on the left. The woman is wearing a black top with a gold chain detail. The background is a blurred indoor setting.

SOME OF THE PRODUCTS THAT I USED ARE SENSITIVE TO LIGHT.

KINDRA WAVED THE LIGHT WAND OVER BRIANNA'S HAIR SEVERAL TIMES.

OR
THEY WILL
BE FOR THE NEXT
FEW MINUTES
AT LEAST.



SO
I CAN MAKE
IT ANY COLOR
THAT YOU
LIKE.



WHICH
ONE WOULD YOU
PREFER?





I'M
PARTIAL TO
PURPLE, BUT JUST
THE TIPS,
PLEASE.



YEAH!
JUST LIKE
THAT!

I
AGREE! YOU
HAVE GREAT TASTE.
THIS HAIR LOOKS FUCKING
GORGEOUS ON YOU!
LOVE THAT
PURPLE.



TOTALLY!
YOU'RE LOOKING
P.H.I.N.E., BRI BRI,
YOU'RE SUCH A STACKED
AND CURVY SLUT. I
WANNA BANG YOU
RIGHT NOW.



YOU'RE
ONE TO TALK,
YOU FARA-FAUCET
LOOKING FUCK-SLUT!
OHHH! NEW NICKNAME!
FARA FUCK-SLUT!
THAT'S SO
YOU.



WE
DO HAVE
A BACK ROOM
THAT'S NOT
IN USE.



MORE TO
COME!